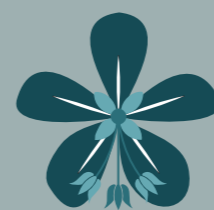


VILLAS



CYTISIA

Plans | Villa A
2 villas jumelles

Villa A

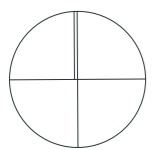
IMPLANTATION

SURFACE

Habitable	143 m ²
Sous-sol	78 m ²
Utile	221 m ²
Parcelle	521 m ²
Jardin	350 m ²



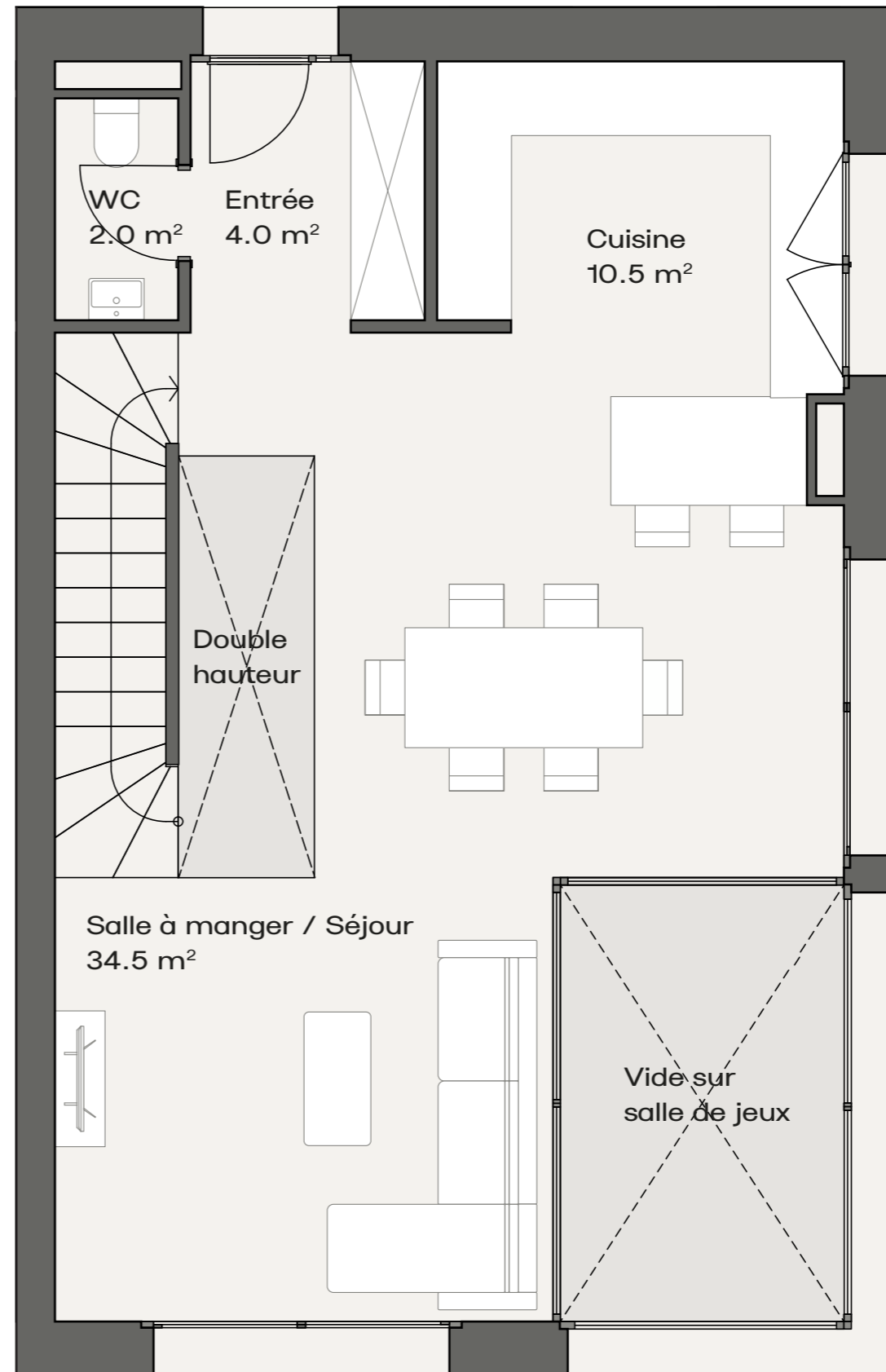
N



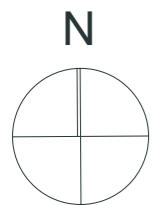
Orientation : Sud | Échelle : 1/125

Villa A

REZ-DE-CHAUSEE



Cuisine	10.5 m ²
Entrée	4.0 m ²
WC	2.0 m ²
Salle à manger, Séjour	34.5 m ²

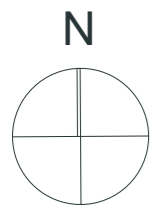
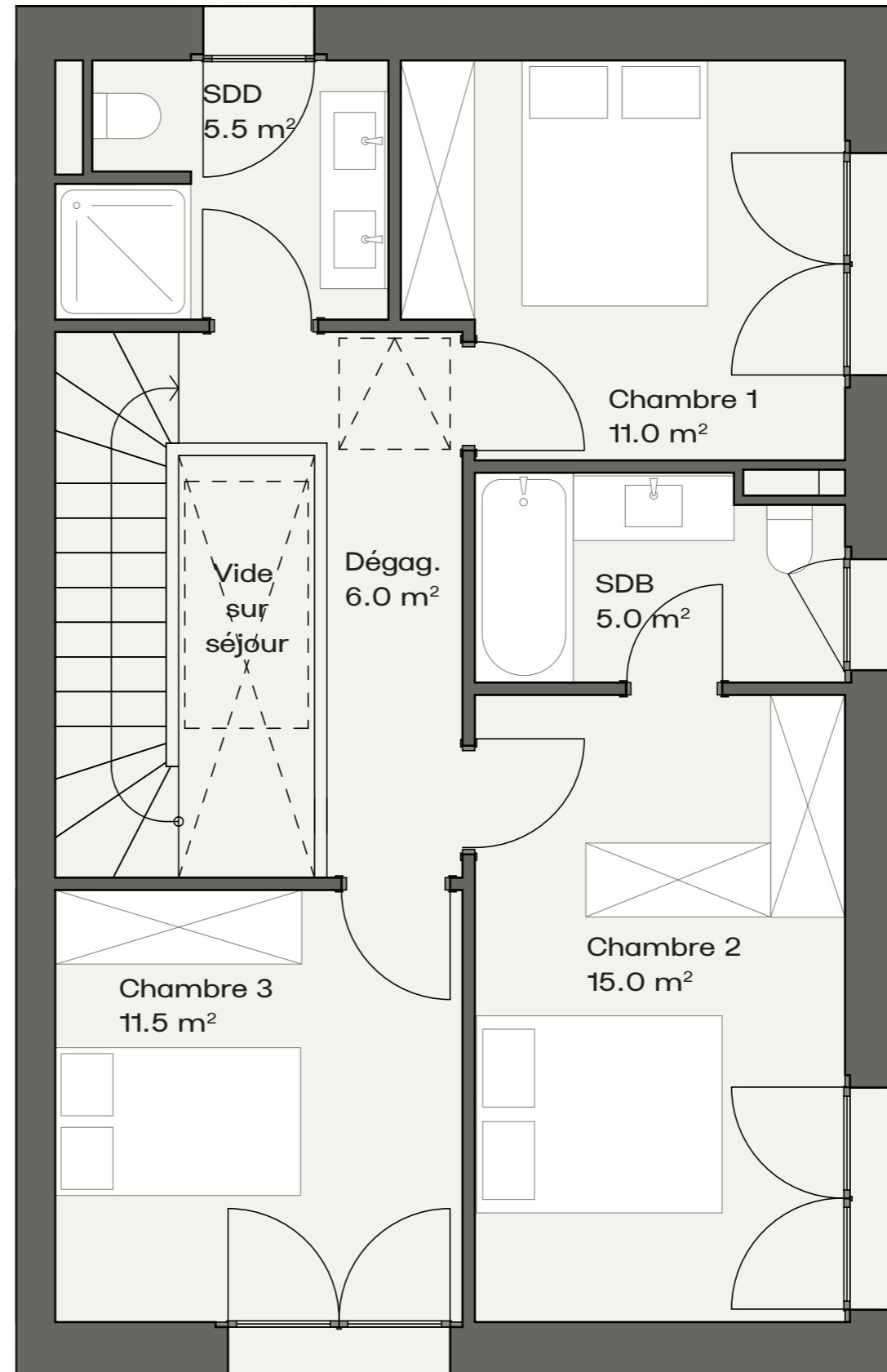


Échelle: 1/50

Villa A

1^{ER} ÉTAGE

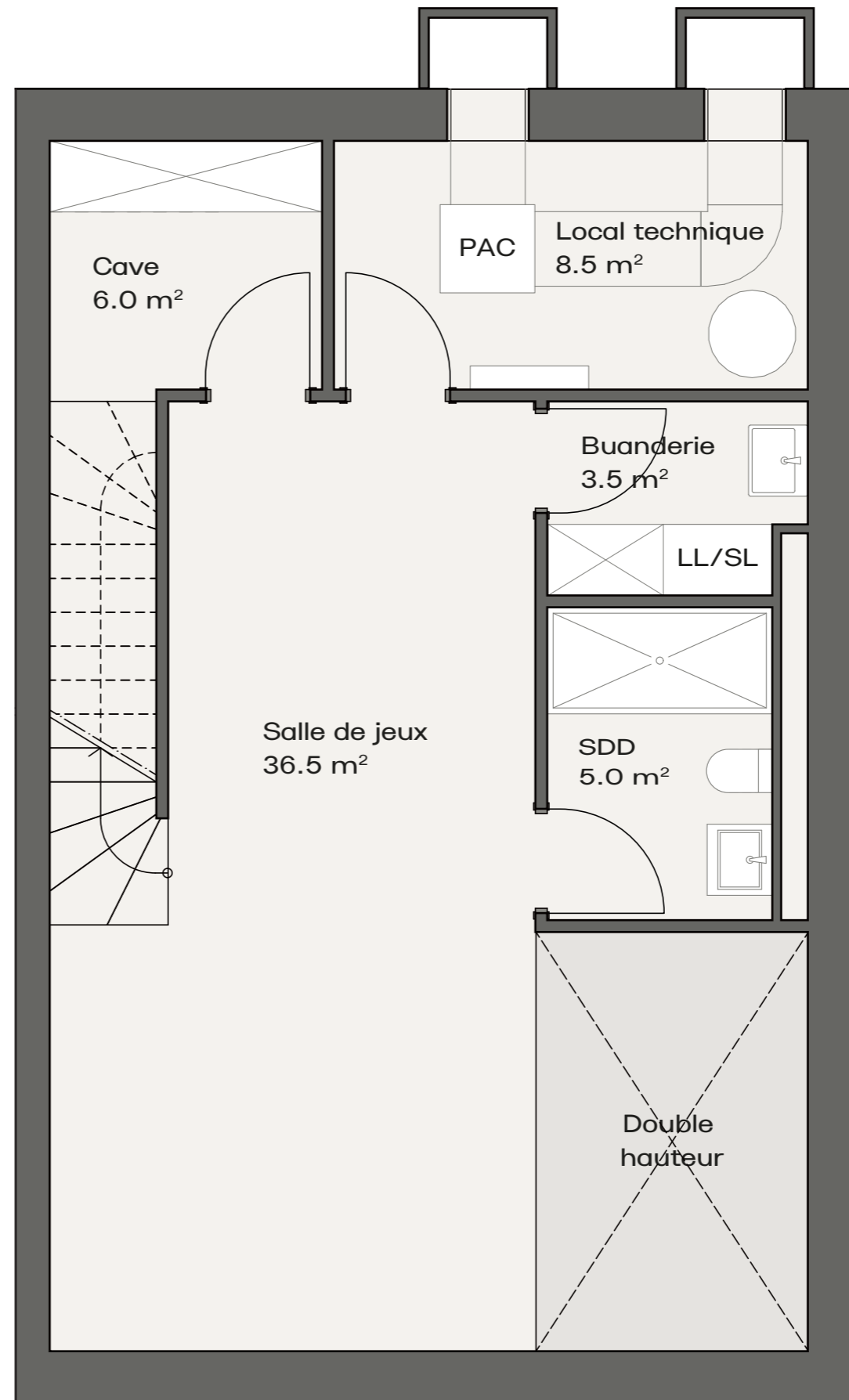
Chambre 1	11.0 m ²
Chambre 2	15.0 m ²
Chambre 3	11.5 m ²
Salle de douche	5.5 m ²
Salle de bain	5.0 m ²
Dégagement	6.0 m ²



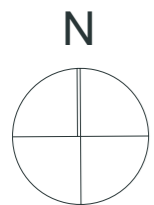
Échelle: 1/50

Villa A

SOUS-SOL



Local technique	8.5 m ²
Cave	6.0 m ²
Buanderie	3.5 m ²
Salle de jeux	36.5 m ²
Salle de douche	5.0 m ²



Échelle: 1/50